

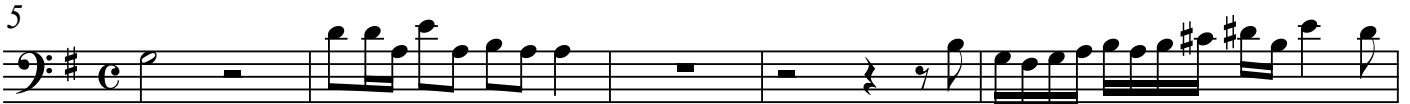
# Psalm 100 (SWV 36)

## Trombone

(Jauchzet dem Herren)  
*for Choir & Brass*

Heinrich Schütz (1585-1672)  
Arr. Michel Rondeau

Moderato ♩ = 120



38



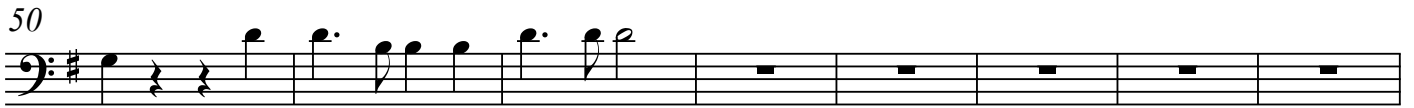
Musical staff for measure 38, featuring a bass clef, a key signature of one sharp (F#), and a common time signature (C). The staff contains a sequence of eighth and sixteenth notes, with some notes beamed together. There are rests in the second and fourth measures.

44



Musical staff for measure 44, featuring a bass clef, a key signature of one sharp (F#), and a common time signature (C). The staff contains a sequence of eighth and sixteenth notes, with some notes beamed together. There are rests in the first and third measures.

50



Musical staff for measure 50, featuring a bass clef, a key signature of one sharp (F#), and a common time signature (C). The staff contains a sequence of eighth and sixteenth notes, with some notes beamed together. There are rests in the second, third, fourth, fifth, and sixth measures.

58



Musical staff for measure 58, featuring a bass clef, a key signature of one sharp (F#), and a common time signature (C). The staff contains a sequence of eighth and sixteenth notes, with some notes beamed together. There are rests in the first, second, and third measures.

65



Musical staff for measure 65, featuring a bass clef, a key signature of one sharp (F#), and a common time signature (C). The staff contains a sequence of eighth and sixteenth notes, with some notes beamed together. There are rests in the first, second, third, fourth, and fifth measures.

71



Musical staff for measure 71, featuring a bass clef, a key signature of one sharp (F#), and a common time signature (C). The staff contains a sequence of eighth and sixteenth notes, with some notes beamed together. There are rests in the second and third measures. The staff ends with a double bar line.